

HOUSE REVIEW:

WHITNEY

ARCHITECT

Todd Hallett, AIA

TK Design & Associates

thallett@tkhomedesign.com

248.446.1960

tkhomedesign.com

DIMENSIONS

Width: 55 feet

Depth: 50 feet

Living area: 3,575 sf

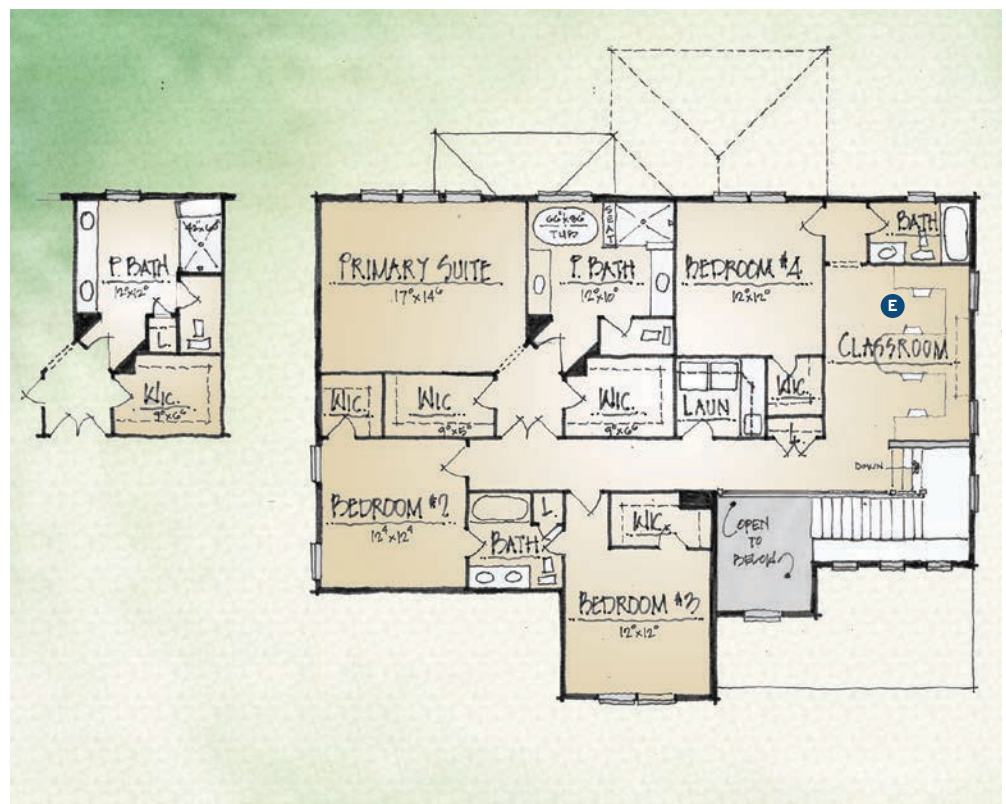


We're seeing a shift in homeowners' wants and needs due to the COVID-19 pandemic: Media rooms, offices, and in-home gyms allow homeowners to work and play at home, while hands-free fixtures, keyless entry, and other zero-contact features help to minimize the spread of germs.

- A** A "Zoom room" allows people working at home the privacy needed for virtual meetings
- B** This flex space can be used as additional office space, a playroom, for storage, or as a guest suite
- C** Tucked away off the kitchen, a cocktail bar promotes a little R&R after a day's work
- D** The study provides a quiet space for those working from home, paying bills, or just seeking a space to peacefully read and unwind
- E** A designated classroom helps children focus on their schoolwork and virtual learning. School materials can also be stored out of the way



FIRST FLOOR



SECOND FLOOR