

## [HOUSE REVIEW]

### THE HOLLY

#### ARCHITECT

TK Design & Associates  
Todd Hallett, AIA, CAPS  
thallett@tkhomedesign.com  
tkhomedesign.com  
248.446.1960

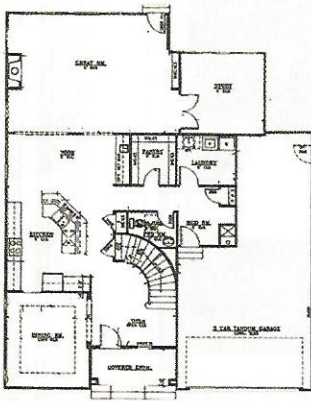
#### 'AFTER' PLAN SIZE

4,131 sf  
Width: 48 feet, 1 inch  
Depth: 60 feet, 8 inches  
Porches: 255 sf  
Garage: 516 sf

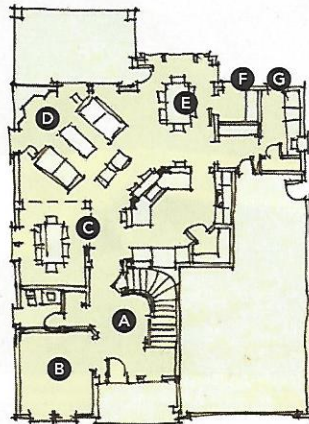


Some things just shouldn't be redone. We never really needed *Caddyshack II*, *Jaws II*, or *Alvin and the Chipmunks: The Squeakquel*. But sometimes a good sequel is necessary. The first version of this design needed a boost to meet current buyer expectations in a highly competitive market. A previously awkward, isolated kitchen is now connected to the living areas; the study can accommodate furniture; the laundry has windows; and a dark, exposed master bedroom has privacy and natural light, with a more space-efficient master bath.

#### BEFORE



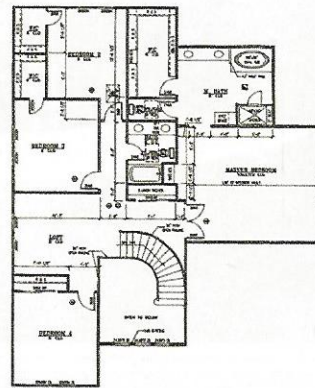
#### AFTER



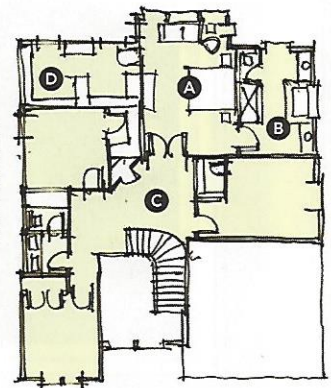
#### FLOOR ONE

- A** A straight stair, rather than a curved one, allows for a dramatic entry while reducing cost
- B** Repositioning the study allows for more openness and better flow
- C** Dining has been relocated for a better connection to the kitchen and a more open feel
- D** Great room has a stronger connection to the kitchen
- E** Nook is now filled with natural light, takes advantage of rear views, and has access to outdoor living
- F** Flex space houses a pocket office or wine room
- G** Laundry room is set on an exterior wall for natural light and ease of venting

#### BEFORE



#### AFTER



#### FLOOR TWO

- A** Master bedroom now faces the rear of the home, maximizing views and privacy
- B** The master bath is now organized and current, using symmetry to balance the utility
- C** A loft space is created at the top of the stairs
- D** Square footage from long hallway has been given to upstairs rooms