

[HOUSE REVIEW]

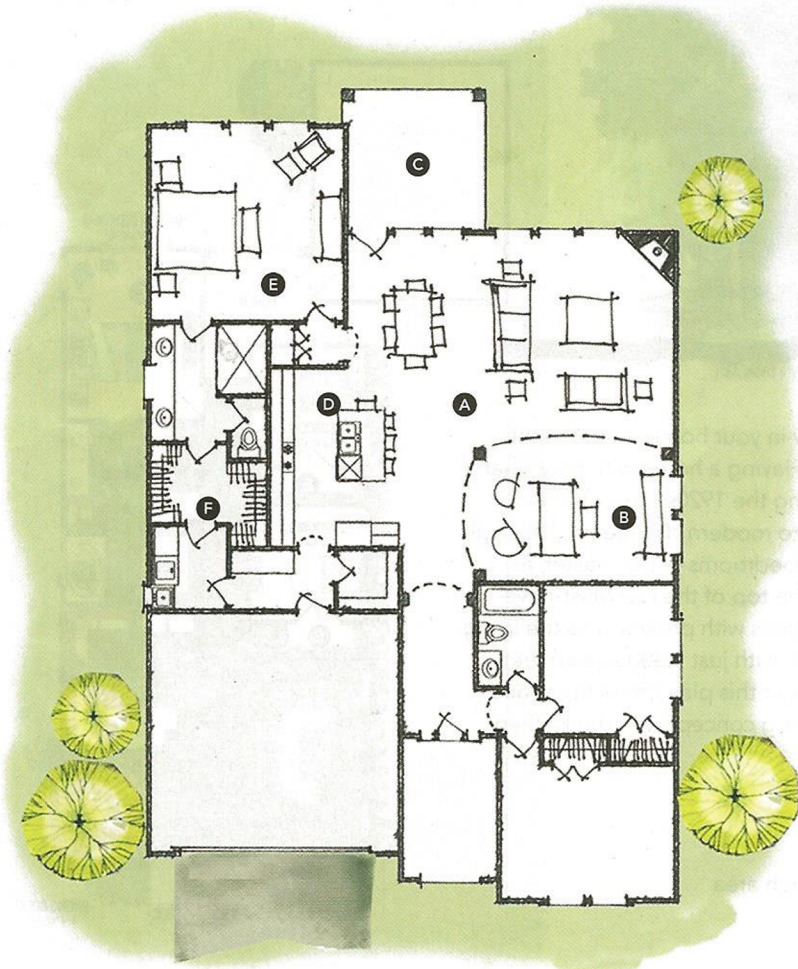
THE KENSINGTON

ARCHITECT

Todd Hallett, AIA, CAPS
TK Design and Architecture
www.tkhomedesign.com
248.446.1960

PLAN SIZE

Living area: 2,077 sf
Porches: 235 sf
Width: 45 feet
Depth: 66 feet



In order to make homes live larger than their actual square footage, they should have long site lines, connectivity between rooms, and minimal hallways. Also, they must include amenities that buyers are used to seeing in much larger homes. This 2,077-square-foot home does all that and more. This house might be considered the "Rudy" of the production home arena. The site lines and spatial relationships allow it to play a whole lot bigger than it actually is.

- A** A large great room that is open to the dining and kitchen area maximizes square footage by eliminating unnecessary hallways.
- B** Flex space has the option to open up to the living area and kitchen. Opening this space enlarges the home visually.
- C** Exterior covered porch creates exterior living space that expands the home.
- D** Kitchen is completely open to the living/dining area. The large island with wrap around seating acts as working and serving surface.
- E** Owner's suite is on the opposite side of the home's secondary bedrooms. This setup provides privacy often only afforded in much larger homes.
- F** Access from owner's closet to laundry provides ultimate convenience.